



KANSAS FORESTRY ASSOCIATION

Kansans for healthy woodlands.

www.KSForestryAssociation.org



Summer 2020 • Issue XIV

KFA Updates and COVID 19 Responses

The KFA Board of Directors decided at the July meeting to postpone all in person field days, events, and awards for 2020 in response to COVID 19. Each of the events will be offered at similar dates in 2021 and the planned locations will remain the same. This is a precautionary measure to ensure the health and safety of all members, hosts, presenters, and attendees. Board meetings can also be attended virtually by all members and information will be shared closer to the meeting date.

Due to the changes in field days, there also will be a mailing this fall to vote on bylaws changes and election of board members. Active members will receive a ballot and information about the changes. There will be additional information provided in future newsletters and communications.



KFA does plan to partner with the Kansas Forest Service and Kansas State Research and Extension to provide virtual field events, presentations, education, and collaborative opportunities this fall as an alternative to traditional field days. Details are still being finalized and an announcement will be shared when it is available. Please let us know if there are any specific topics that you would like to be addressed with the virtual field days.

Finally, the Kansas Forest Service has revised its' Forest Action Plan for 2020. This effort happens every 5 years to focus our efforts on current threats and management strategies within priority landscapes of Kansas. The KFA board of directors did offer guidance and feedback for the document to best serve woodland landowners. The document will be made public after final edits are approved.

Upcoming Events

- *September 1-October 15* – Fall Conservation Trees & Shrubs: Online at kansasforests.org or call 888.740.8733
- KFA Elections & Bylaws Voting – *November-December 2020* – Mailings to Membership
- *November 4 – 9:00-3:00* – Kansas Forestry Association Board Meeting– Kansas Department of Wildlife, Parks, and Tourism Region 2 Office, Topeka
- Fall Forestry Field Day at Ted Cambern's River Farms – Postponed to 2021
- Agroforestry Field Day at the Roger Wells' Family Farm near Americus, KS – Postponed to 2021
- Managing Carbon with Healthy Forests and Forest Products in the Southern Great Plains Workshop – Postponed to 2021

www.KSForestryAssociation.org

Windbreaks are Worth the Wait

For nearly 18 years, I would drive past a farm in Atchison County and watch as the windbreak trees flourished. In life it's so easy to go with the flow and not take the time to stop. It wasn't until a cold, January 2020 day that I decided to pay a visit to the Gigstad Farmstead for a closer look and chat with the landowner.

The windbreak seedlings were planted on Earth Day in 2002 by Atchison County Community grade school students as part of a "Farm Day Experience" for the youth. The new windbreak is approximately 660' long and oriented in an L shape and provides protection from wind and snow coming from the north and west. The current windbreak replaced a failing windbreak that was removed with a dozer. Three rows of Eastern

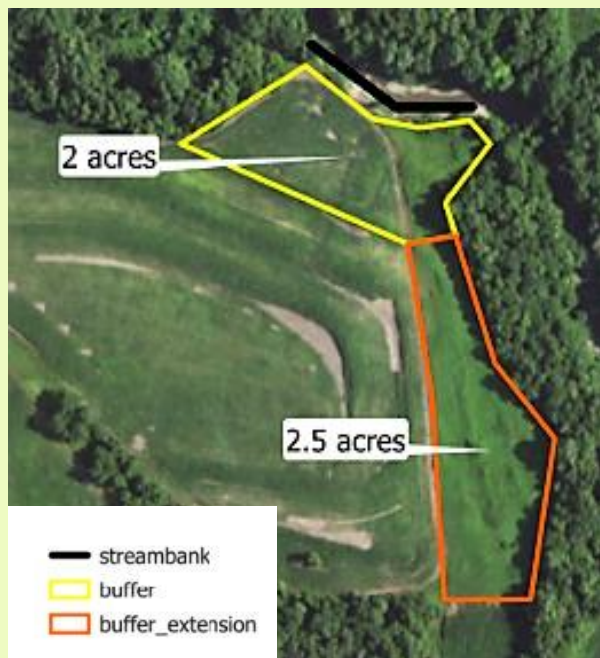
Red Cedar on 15'x 15' spacing have done extremely well, losing only 1 seedling after the first season. One row of Cotoneaster's were planted on the inside and haven't fared well over time, most likely due to shading and climate issues. The Gigstad's used weed barrier fabric and installed a temporary drip line irrigation system to provide the best growing conditions for the trees. According to Scott Gigstad, Operator of Gigstad Farm, "This was money well spent."

This project received financial cost share assistance from the local NRCS field office in Effingham. Alan Larson, Supervisory District Conservationist said "The Gigstad project is a perfect example of how the Environmental Quality Incentive Program windbreak cost share funding can operate and how successful the long-term results can be." He said the real effort was put forth by the Gigstad family in caring for the trees through the years and it's very evident how well they've done.

The next time you want to pull over for a look or chat to enjoy nature's beauty or someone's hard work, I encourage you to do so! - Luke Terry, Owner, *Custom Forestry Applications LLC*



Streambank Stabilization near Kennekuk Church



The Kansas Forest Service has continued their strong partnership with the Kickapoo Tribe in Kansas with another landscape scale grant to address water quality issues in Northeast Kansas. Watershed Forester, Jarran Tindle had streambank expert Phil Balch of Wildhorse Riverworks and the Kickapoo Environmental Office's Nonpoint Source Coordinator at the new worksite in early July. Jarran is coordinating a major renovation and improvement project on this site which, will allow for improved functionality and pollutant reduction. The area is just north of the Kickapoo Farm and Ranch and is just east of the Kennekuk Church.

– David Hebert, Kickapoo Environmental Office

Right: David Hebert from the Kickapoo Environmental Office helps to survey the streambank to build a computer model that will be used for Phil Balch's engineering software.



2020 National Leadership Community Conference in Baltimore

Strengthening, Growing, and Increasing Conservation Impact was the theme for this year's NLCC by the American Forest Foundation and American Tree Farm System. There were more than 250 inspectors, committee members, and general conservation professionals that joined in collaborative efforts to increase woodland stewardship. Through a scope of connectivity, inclusion, and impact sessions focused on current efforts, programs, and tools to guide landowners and tree farmers through the journey of best management practices.

Highlights of the event were strategies through technology like WoodsCamp to personalize individual management, the Family Forest Carbon Program to explore market-based conservation solutions, become more inclusive and empowering diverse membership, transition planning, and expand peer-to-peer efforts through landscape scale management projects.

There were great opportunities to work with regional and national programs to compare success and struggles that face inspection, certification, membership, funding, and general woodland management. KFA has a strong partnership with ATFS and this conference offers opportunities to further engage in future projects to expand the conservation and management practices in Kansas.



Angela Wells, Director of ATFS, delivers part of the plenary session.

Riparian Quality Enhancement Initiative

The Riparian Quality Enhancement Initiative (RQEI) is an initiative that seeks to help landowners improve riparian health, land profitability, and wildlife habitat. In partnership with the Kansas Forest Service, the Division of Conservation is offering financial and technical service for forestry practices to Kansas Landowners. The RQEI will be open to KACD/SCC Areas III, IV and V with extra ranking preference being given to projects that are within the Trees for Clean Water Regional Conservation Partnership Program (RCPP) targeted areas.

Eligible practices within the program include Forest Stand Improvement, Tree/Shrub Site Preparation, Tree/Shrub Pruning, Tree/Shrub Establishment, Riparian Forest Buffer, Herbaceous Weed Control, Cover Crop, Channel Bed Stabilization, Streambank/Shoreline, and RCPP Incentive Payment. Each of these practices are eligible for 80% cost share with a limit of \$10,000 per landowner annually.

Landowners that are interested, should complete an application with their Conservation District Manager and District Forester. The application process is on a continual basis and will be evaluated at the end of each month. A deadline of May of the following year will be in place to complete the cost-share practices. Please contact your District Forester or Conservation District Manager if you have any questions. - *Kansas Department of Agriculture Division of Conservation*



Eligible County RCPP Targeted Area

A New American Tree Farm Regional Manager as Kansas Moves West



As the American Tree Farm System (ATFS) realigned their regions, Kansas opted to move West to have better access and collaborative capabilities. With the move, we will no longer have Kayti Brinkman as our Regional Manager as she remained in the North region. We would like to introduce our new Regional Manager, Parks Brigman from South Dakota.

Parks was announced as the newest member of the ATFS Team as the Western ATFS Regional Manager. In this role, Parks will be working closely with the ATFS and Western Conservation teams to assess and help implement the path each state will take to strengthen, grow, and increase the impact of the ATFS network.

Previously, Parks was working with the South Dakota Department of Agriculture, where he was their Forest Stewardship Program coordinator and state Tree Farm program administrator. He was born and raised in Columbia, South Carolina and studied forestry at Virginia Tech, a career path inspired by time spent on his grandparents' Tree Farm in Alleghany County, Virginia. Parks will be based in Rapid City, South Dakota. His email address is pbrigman@forestfoundation.org. We look forward to working with Parks in his new role. - *ATFS News Release*



2610 Claflin Road
Manhattan, KS. 66503

**Special thanks to contributing authors:
Luke Terry, ATFS, David Hebert, KDA-DOC**

Pictures by: Darci Paull, ATFS, David Hebert, KDA-DOC

**Please contact a board member or the program director to
become more involved or serve as board member.
Let us know how we can better serve with the difficulties of
COVID.**

If you would like to receive this newsletter electronically, please contact
Shane Neel, Program Director with your email address at: shane@ksu.edu



Visit us online! www.KSForestryAssociation.org



@KSForestryAssociation



@KSForestry



@ksforestry

